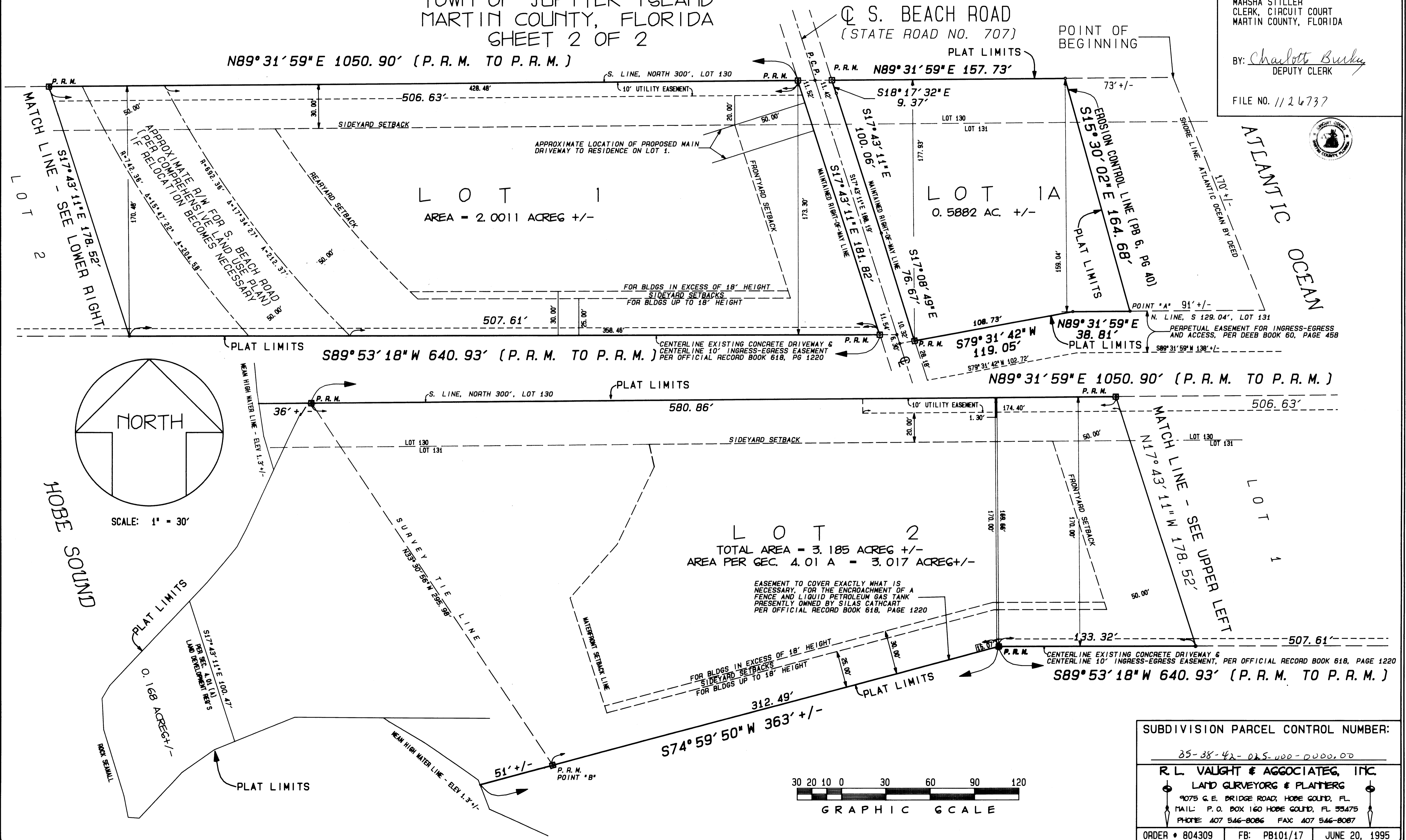


# COCONUT POINT SUBDIVISION

BEING A REPLAT OF PORTIONS OF LOTS 130 AND 131, GOMEZ GRANT AND JUPITER ISLAND,  
 PLAT BOOK 1, PAGE 80, PUBLIC RECORDS OF PALM BEACH (NOW MARTIN) COUNTY, FLORIDA  
 TOWN OF JUPITER ISLAND  
 MARTIN COUNTY, FLORIDA  
 SHEET 2 OF 2

I, MARSHA STILLER, CLERK OF THE  
 CIRCUIT COURT OF MARTIN COUNTY,  
 FLORIDA, HEREBY CERTIFY THAT  
 THIS PLAT WAS FILED FOR RECORD  
 IN PLAT BOOK 13, PAGE 82,  
 MARTIN COUNTY PUBLIC RECORDS,  
 THIS 14<sup>th</sup> DAY OF July, 1995.  
 MARSHA STILLER  
 CLERK, CIRCUIT COURT  
 MARTIN COUNTY, FLORIDA  
 BY: Charlotte Burkley  
 DEPUTY CLERK  
 FILE NO. 1126737



SUBDIVISION PARCEL CONTROL NUMBER: 35-38-42-025-000-0000.00		
R. L. VAUGHT & ASSOCIATES, INC. LAND SURVEYORS & PLANNERS 9075 G.E. BRIDGE ROAD, HOPE SOUND, FL. MAIL: P.O. BOX 160 HOPE SOUND, FL 33475 PHONE: 407 546-8086 FAX: 407 546-8087		
ORDER # 804309	FB: PB101/17	JUNE 20, 1995